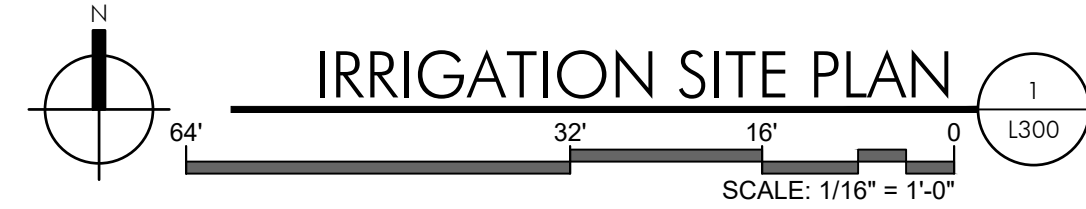
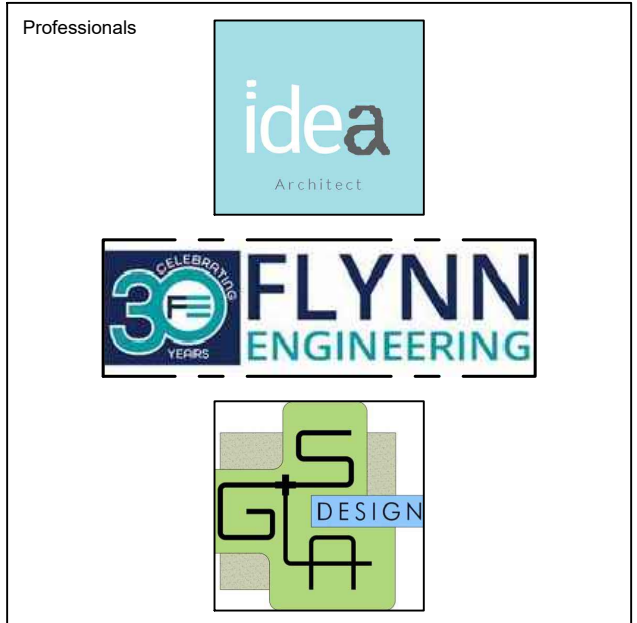


IRRIGATION MATERIALS LIST		QTY.
KEY	ITEM	
	PVC laterals shall be Class 200 PVC (sized as shown on plans)	as required
	MAIN shall be Class 200 PVC	as required
	Bubbler Zone Piping	as required
	PVC sleeves shall be Class 200 PVC (sized double the width of the pipe within, installed wherever pipe runs under hardscape)	as required
	Flexible PVC or Polypipe (for swing joints)	as required
	Water Meter and Backflow Prevention Assembly (See Civil Plans)	1
	Electric Controller RAINBIRD ESP Series Controller	1
	Rainbird RSD Series Rain Sensor (locate in area of free rainfall)	1
	RAINBIRD 200-PESB 2" Electromechanical Solenoid Control Valve	#
	Irrigation Control Wire	as required
	Rainbird 1" Inline Pressure Regulator (PSI-M40X-100)(drip zones not to exceed 40psi max)	as required
	RAINBIRD XFS Subsurface Dripperline XFS-09-12-500/250/100 Air/Vacuum Relief Valves Kit (3/4" Air relief valve/ Easy Fit Compression Tee/ and Flush Cap)	as required
	Commercial Wide Flow Control Zone Kit (XCZ-100-PRB-LC) (0.3-20 gpm)	as required
	RAINBIRD 3-RC Quick Coupler Valve	as required
	PVC Supply Header for dripperline Class 200 PVC	as required
	RAINBIRD Xeri-Bubbler UXB-360-1032 (.6 gpm)	as required
	RAINBIRD Xeri-Spray Adjustable mister 360 ADJUST (.1 gpm) (install into dripline with Xeri-bug drip emitters for spray into bromeliad cups)	as required
	RAINBIRD 1300A-F Adjustable Flood Bubbler 1300A-F (1.5 gpm)	as required
	RAINBIRD Rotary Spray Heads 17'-24' radius R-VAN 24 Series @ 40 PSI 6' pop-up in grass areas 12' pop-up on risers in shrub beds 24-360 (3.13 gpm) 24 (270") (2.31 gpm) 24 (180") (1.54 gpm) 24 (120") (1.0 gpm) 24 (90") (.77 gpm)	as required
	RAINBIRD Rotary Spray Heads 13'-18' radius R-VAN 18 Series @ 40 PSI 6' pop-up in grass areas 12' pop-up on risers in shrub beds 18-360 (1.8 gpm) 18 (270") (1.42 gpm) 18-(180") (.98 gpm) 18-(120") (.6 gpm) 18-(90") (.5 gpm)	as required
	RAINBIRD Rotary Spray Heads 8'-14' radius R-VAN 14 Series @ 40 PSI 6' pop-up in grass areas 12' pop-up on risers in shrub beds 14-360 (1.22 gpm) 14 (270") (.92 gpm) 14-(180") (.61 gpm) 14-(120") (.4 gpm) 14-(90") (.31 gpm)	as required
	RAINBIRD Rotary Spray Heads 8'-14' radius R-VAN Series Strip Nozzles @ 40 PSI 15-sst (.48 gpm) 15-lcs (.24 gpm) 15-rcs (.24 gpm)	as required

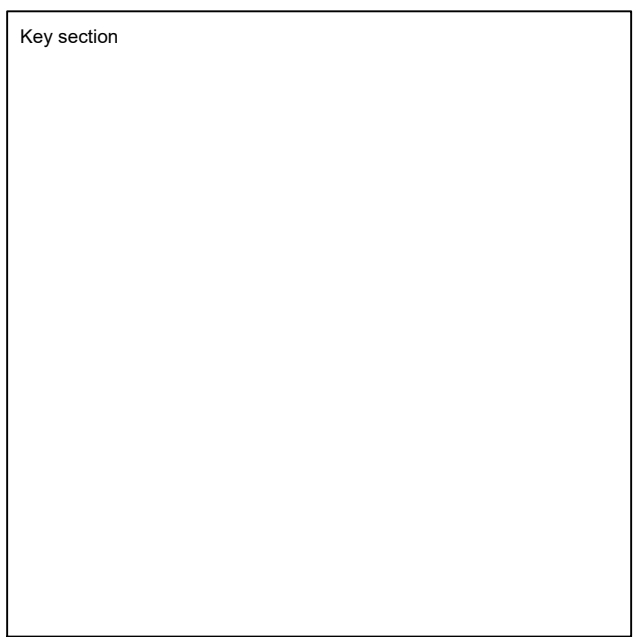


absolute-idea.com
CANAL PARK
3323 NE 163rd Street, Suite 200 North Miami Beach, FL 33160
☎ 305.792.0015 ☎ 305.931.0279 ✉ info@absolute-idea.com



REV.	DATE	DESCRIPTION
01	XX-XX-2024	D.R.C SUBMITAL

ALL MEASUREMENTS MUST BE VERIFIED BEFORE BEGINNING THE WORKS. NO MEASUREMENTS ARE TO BE SCALED DIRECTLY FROM THIS DRAWING.



Client
VERA FUND
NICK POLYUSHKIN
& YURI KHARITONENKOV
TEL: 305.833.3303

Project
**1600 S FEDERAL HIGHWAY
(MIXED-USE PROJECT)**
1600 SOUTH FEDERAL HIGHWAY,
POMPAÑO BEACH, FL 33062

Title	
IRRIGATION SITE PLAN	
Drawn GSLA	Field LANDSCAPE ARCH
Verified KG	Scale as shown
Approved KG	Date 10-09-2024
Project Manager KG	Dwg. no. L-300
Project 24-838	